

# The Requirement for the Dam1 Complex Is Dependent upon the Number of Kinetochores Proteins and Microtubules

Laura S. Burrack,<sup>1</sup> Shelly E. Applen,<sup>1</sup> and Judith Berman<sup>1,\*</sup>

<sup>1</sup>Department of Genetics, Cell Biology and Development, University of Minnesota, Minneapolis, MN 55455, USA

## Summary

The Dam1 complex attaches the kinetochore to spindle microtubules and is a processivity factor in vitro [1, 2]. In *Saccharomyces cerevisiae*, which has point centromeres that attach to a single microtubule, deletion of any Dam1 complex member results in chromosome segregation failures and cell death [3–5]. In *Schizosaccharomyces pombe*, which has epigenetically defined regional centromeres that each attach to 3–5 kinetochore microtubules, Dam1 complex homologs are not essential [6]. To determine why the complex is essential in some organisms and not in others, we used *Candida albicans*, a multimorphic yeast with regional centromeres that attach to a single microtubule [7]. Interestingly, the Dam1 complex was essential in *C. albicans*, suggesting that the number of microtubules per centromere is critical for its requirement. Importantly, by increasing CENP-A expression levels, more kinetochore proteins and microtubules were recruited to the centromeres, which remained fully functional. Furthermore, Dam1 complex members became less crucial for growth in cells with extra kinetochore proteins and microtubules. Thus, the requirement for the Dam1 complex is not due to the DNA-specific nature of point centromeres. Rather, the Dam1 complex is less critical when chromosomes have multiple kinetochore complexes and microtubules per centromere, implying that it functions as a processivity factor in vivo as well as in vitro.

## Results and Discussion

### Dam1 Complex Homologs in *Candida albicans* Are Essential for Viability

The Dam1 (DASH) complex is comprised of ten proteins and has important roles in maintaining the connection between kinetochore proteins and spindle microtubules [8]. Although the Dam1 complex is broadly conserved in fungi [9], its contribution to chromosome segregation differs in different organisms. In the budding yeast *Saccharomyces cerevisiae*, deletion of any Dam1 complex member results in chromosome segregation defects and cell death [3–5]. In *S. pombe*, Dam1 complex members are also kinetochore components, yet they are not essential for viability [6]. Several differences between centromeres and kinetochores in *S. cerevisiae* and *S. pombe* could explain the divergent requirement for the Dam1 complex components despite their conservation among fungi. *S. cerevisiae* has small (~150 bp) point centromeres in which DNA sequence specifies kinetochore position, whereas *S. pombe* has larger (40–100 kb) regional centromeres that are determined epigenetically [9]. There are some kinetochore proteins found specifically in

organisms with point centromeres (e.g., Ndc10) and others found specifically in organisms with regional centromeres (e.g., CENP-H/Fta3) [9]. Differences in kinetochore protein composition may affect the requirement for the Dam1 complex. Alternatively, the requirement of the Dam1 complex members for viability may be a matter of one kinetochore-microtubule attachment versus multiple kinetochore-microtubule attachments per centromere. Kinetochores in *S. cerevisiae* contain a single nucleosome containing CENP-A, the centromere-specific histone H3 isoform, and attach to a single spindle microtubule [10], whereas *S. pombe* kinetochores are comprised of multiple CENP-A nucleosomes and form attachments to 2–3 spindle microtubules per centromere [7].

To determine why the requirement for the Dam1 complex differs in different fungi, we used the pathogenic yeast *C. albicans*, which has small (3–10 kb) yet regional centromeres, with an average of four CENP-A nucleosomes that attach to a single spindle microtubule per kinetochore [7]. First, we identified putative *C. albicans* homologs of Dam1 complex members (Figure 1A and see Table S1 available online). The *C. albicans* Dad1 homolog is an intrinsically disordered protein with a structure similar to that of *S. cerevisiae* Dad1 [11]. By chromatin immunoprecipitation (ChIP), Dad1-GFP and Dam1-GFP bind centromere DNA regions that colocalize with regions bound by CENP-A (Figure 1B). Additionally, Dad1-GFP and Dad2-GFP localized by fluorescence microscopy as discrete spots within DAPI-stained nuclei; the localization pattern of Dad1-GFP and Dad2-GFP was highly similar to that of other kinetochore proteins, such as CENP-A-GFP and Mtw1-GFP (Figure 1C). Together, these results support the conclusion that the genes identified encode Dam1 complex member homologs in *C. albicans*.

We next asked whether Dam1 complex members are required for viability in *C. albicans*, an organism with regional centromeres. Because *C. albicans* does not undergo meiosis [12], tetrad analysis cannot be used to determine essentiality. Three independent methods examining four gene products consistently found that Dam1 complex members are required for viability in *C. albicans*. First, gene replacement and conditional expression strains [13], in which the only remaining copy of *DAD1*, *DAD2*, or *SPC19* was conditionally regulated by a Tet-off promoter system, failed to grow when expression was repressed (Figure 1D). Second, when one copy of *DAM1* or *DAD2* was deleted and the *MET3* promoter was used to regulate the remaining copy, the strains did not grow under repressive conditions (media with methionine and cysteine; Figure S1A). Activation and repression of the promoter in each conditional promoter system was confirmed by quantitative reverse-transcriptase PCR (Figure S1B), and all strains grew as well as control strains under nonrepressing conditions (Figure 1D and Figure S1A). Third, we used a UAU single transformation approach [14] to determine that *DAD2* and *SPC19* are required for viability in *C. albicans* (Figures S1C–S1E). Together, these experiments indicate that Dam1 complex members are essential in *C. albicans*. Thus, the Dam1 complex members are required for viability not only in *S. cerevisiae*, which has point centromeres, but also in *C. albicans*, which has regional centromeres.

\*Correspondence: jberman@umn.edu

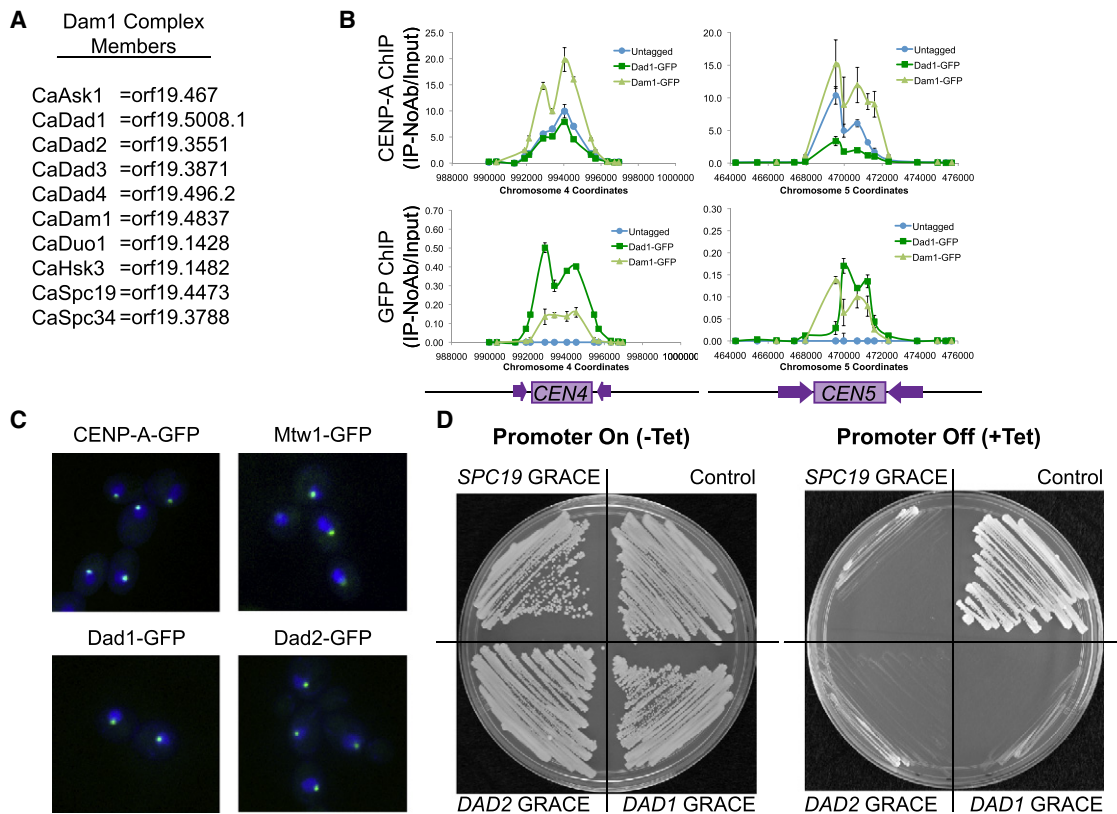


Figure 1. *C. albicans* Dam1 Complex Proteins Bind Centromere DNA Regions and Are Essential in *C. albicans*

(A) *C. albicans* Dam1 complex homologs identified by reciprocal protein-protein BLAST and Pfam family analysis (see also Table S1). (B) ChIP with anti-CENP-A (top) and anti-GFP (bottom) antibodies at *CEN4* and *CEN5* DNA regions in BWP17 (untagged, blue), Dad1-GFP (dark green), and Dam1-GFP (light green) strains shows colocalization of CENP-A and Dam1 complex members on centromeric DNA. Data shown are mean  $\pm$  standard error of the mean (SEM) of qPCR analysis of each primer set in duplicate and are representative of three biological replicates. (C) GFP-tagged CENP-A, Mtw1-GFP, Dad1-GFP, and Dad2-GFP (green) show similar localization patterns within DAPI-stained nuclei (blue). Cells were imaged by fluorescence microscopy at 1000 $\times$  total magnification. (D) Gene replacement and conditional expression (GRACE) *DAD1*, *DAD2*, or *SPC19* strains and the control strain (SC5314) all exhibited robust growth on SDC-Ura media (left) but failed to grow when the Tet-off promoter was repressed by the addition of 50  $\mu$ g/ml tetracycline to SDC-Ura media (right).

### Extra Kinetochores Proteins and Spindle Microtubules Localize to Centromeres When CENP-A Is Overexpressed

To test whether the requirement of Dam1 complex members is due to the single kinetochores-microtubule attachment in both *S. cerevisiae* and *C. albicans* versus the multiple kinetochores-microtubule attachments per centromere in *S. pombe*, we needed to develop a method to increase the number of kinetochores-microtubule attachments in *C. albicans*. This approach is not possible in *S. cerevisiae*, where the number of kinetochores-microtubule attachments is limited by the presence of a single CENP-A nucleosome. *CSE4*, which encodes the centromeric-specific histone H3 isoform CENP-A in *C. albicans* [15], is at the top of the kinetochores assembly hierarchy [16, 17] and is closely associated with centromere DNA [18] (Figure 2A). *CSE4* expression was conditionally increased by at least 5-fold by placing one copy of the *CSE4* gene under control of the *PCK1* promoter [19], which is repressed by growth in glucose and induced to high levels by growth in succinate (Figure S2A). Overexpression of *CSE4* increased centromeric binding of CENP-A to 293%  $\pm$  12% of wild-type levels, as measured by ChIP (Figure 2B).

Interestingly, CENP-A binding remained localized to the centromere and did not spread to neighboring DNA (Figure 2B). *C. albicans* centromere regions normally have four CENP-A

nucleosomes per centromere [7]. The 3-fold increase in CENP-A binding to the centromeric DNA would result in approximately 12 CENP-A nucleosomes per centromere. Interestingly, this is close to the maximum number of nucleosome occupancy sites ( $\sim$ 10–12) predicted to be present in *C. albicans* centromere regions [20]. Consistent with this model, increased association of CENP-A with centromeres results in decreased binding of canonical H3 to the region, as measured by ChIP (Figure S2B). When CENP-A was overexpressed in *S. cerevisiae*, CENP-A remained bound only at the point centromere DNA and was removed from other regions by proteasome-dependent degradation [21]. Increased amounts of CENP-A also appear to remain at least mostly associated with centromeric regions in *S. pombe*, because CENP-A-GFP overexpression resulted in increased fluorescence signal from kinetochores foci [7]. In contrast to fungi, overexpression of CENP-A in *Drosophila* [22] and in vertebrate cells [23] can result in CENP-A mislocalization and spurious kinetochores formation on chromosome arms. These differences between species may be due to differences in levels of overexpression; alternatively, fungi may exclude CENP-A from noncentromeric regions more efficiently than metazoans.

Overexpression of *CSE4* using a conditional promoter increased the recruitment of the inner kinetochores protein

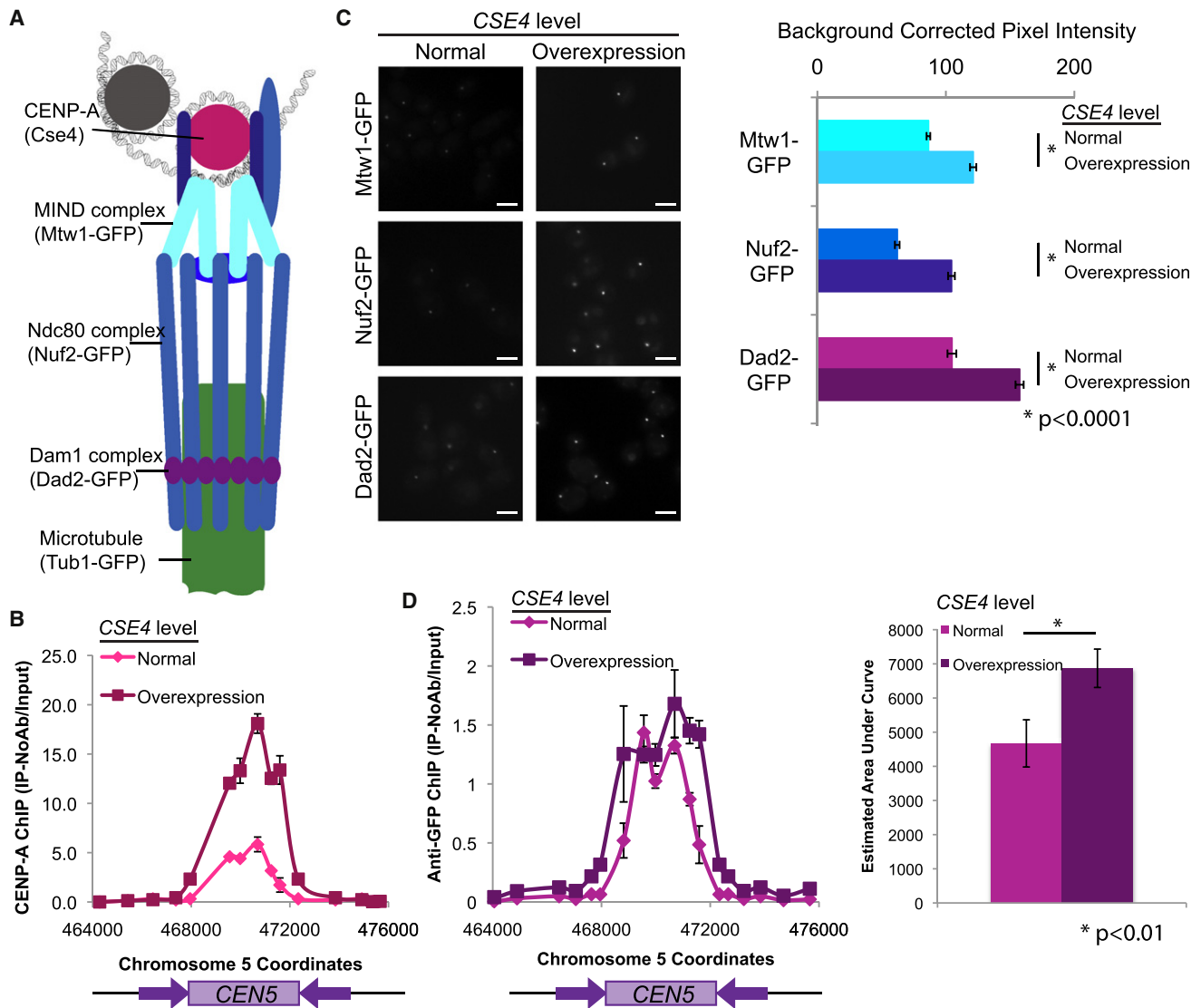


Figure 2. Extra Kinetochores Proteins Localize to Centromeres When CENP-A Is Overexpressed

(A) Schematic of kinetochore protein organization (adapted from [18]).

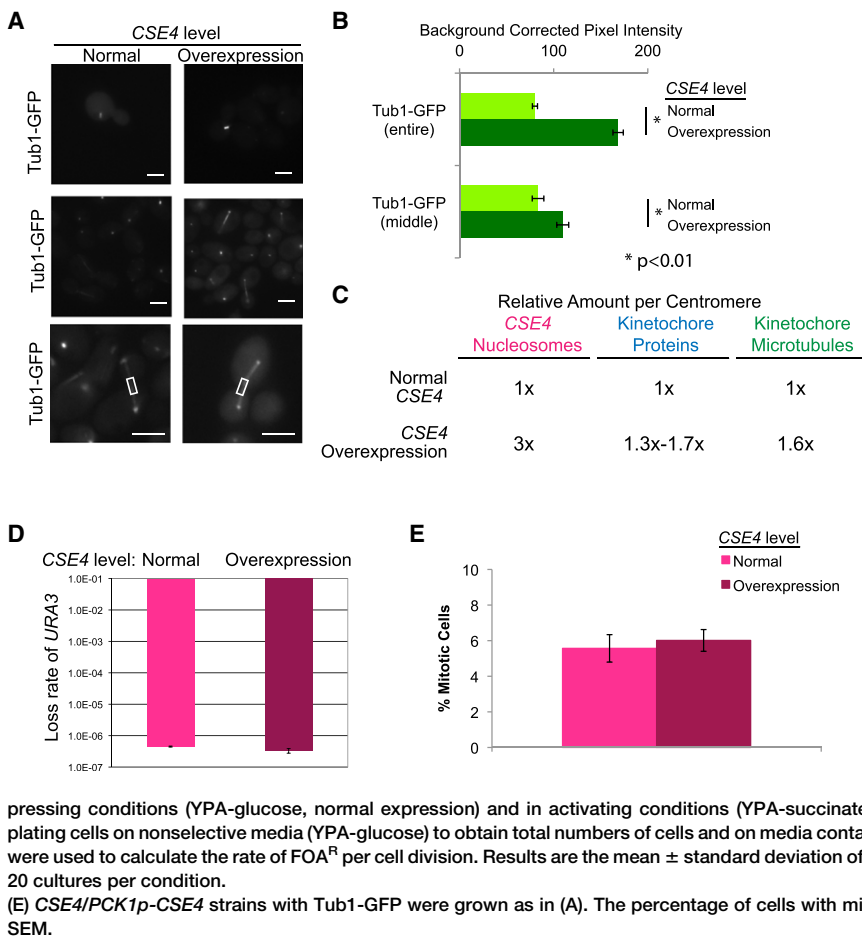
(B) Anti-CENP-A ChIP analyzed with primers amplifying *CEN5* for *PCK1p-CSE4/CSE4* strains grown in repressing conditions (YPA-glucose, normal expression, pink) and in activating conditions (YPA-succinate, overexpression, maroon) for 6 hr. Data shown are mean  $\pm$  SEM of each primer set in duplicate and are representative of three biological replicates.

(C) *PCK1p-CSE4/CSE4* strains with Mtw1-GFP, Nuf2-GFP, or Dad2-GFP were grown in repressing conditions (SDC-glucose, normal expression, left) and in activating conditions (SDC-succinate, overexpression, right) for 6 hr. Cells were imaged at 1000 $\times$  total magnification with a GFP filter set. Scale bar represents 2  $\mu$ m. GFP fluorescence was quantified by selecting the kinetochore region in each cell and measuring total pixel intensity in the region, corrected for background fluorescence. Data shown are mean  $\pm$  SEM for at least 100 cells/experiment for three biological replicates. Differences between normal expression of *CSE4* and overexpression of *CSE4* for each strain were found to be statistically significant ( $p < 0.0001$ ) using two-tailed unpaired Student's *t* tests (\*).

(D) *PCK1p-CSE4/CSE4* strains with Dad1-GFP were grown in repressing conditions (YPA-glucose, normal expression) and in activating conditions (YPA-succinate, overexpression) for 6 hr. ChIP was performed with anti-GFP antibodies to assess binding of Dad1-GFP at *CEN5* DNA regions. Data shown on the left are mean  $\pm$  SEM of qPCR analysis of each primer set in duplicate and are representative of three biological replicates. On the right, the mean  $\pm$  SEM of the estimated area under the curve for the *CEN5* region for the three replicates is shown. Differences between repressing and inducing conditions were found to be statistically significant ( $p < 0.01$ ) using a two-tailed paired Student's *t* test.

Mtw1 to centromere regions in *C. albicans* [24]. Thus, we asked whether overexpression of *CSE4* would result in increased recruitment of other kinetochore proteins as well. We examined the localization of representative proteins of the MIND complex (Mtw1-GFP), Ndc80 complex (Ndc80-GFP and Nuf2-GFP), and Dam1 complex (Dad1-GFP and Dad2-GFP) to kinetochore foci using quantitative microscopy under conditions of normal and high levels of *CSE4* expression

(Figure 2C and Figure S2C). The average fluorescence intensity, corrected for background fluorescence, and maximum fluorescence intensity of each GFP-tagged kinetochore protein increased significantly when *CSE4* was overexpressed ( $p < 0.01$ ). The average amount of fluorescence intensity that localized to kinetochore foci ranged from 129% to 168% of the average fluorescence intensity with normal *CSE4* expression (Figure 2C and Figure S2D). The maximum fluorescence



intensity at the kinetochores when *CSE4* was overexpressed ranged from 140% to 212% of the maximum fluorescence intensity with normal *CSE4* expression. ChIP analysis of Mtw1-GFP and Dad1-GFP binding to centromere DNA regions confirmed that kinetochores protein binding to centromeres was enhanced by *CSE4* overexpression (Figure 2D and Figure S2E). Dad1-GFP binding at *CEN5*, as measured by estimating the area under the curve, significantly increased by approximately 1.5-fold ( $p < 0.01$ ), consistent with the increases in fluorescence intensity observed (Figure 2D, right). In contrast, control cells without the *PCK1* promoter driving *CSE4* expression exhibited much smaller differences in fluorescent dot intensity. The background-corrected fluorescence intensity observed for control cells grown in succinate media ranged from 96% to 122% of the intensity observed when cells were grown in glucose (Figure S2F).

Importantly, we observed increased numbers of microtubules per mitotic spindle when *CSE4* was overexpressed (greater than 2-fold higher total Tub1-GFP fluorescence intensity; Figures 3A and 3B), consistent with extra kinetochores proteins recruiting extra microtubules. During anaphase, the kinetochores-microtubules contract and the fluorescence maximum for the kinetochores-microtubules is found near the spindle pole bodies, whereas the interpolar microtubule fluorescence is concentrated at the center of the spindle [25]. To estimate the increase in interpolar microtubules relative to kinetochores-microtubules, we measured the fluorescence intensity of Tub1-GFP at the center of each anaphase spindle (Figures 3A and 3B, bottom). When *CSE4* was overexpressed,

the fluorescence intensity at the center of each spindle increased to 131% of the intensity observed with normal *CSE4* expression, compared to 210% of the control intensity when the entire spindle was measured. These results suggest that a significant fraction of the extra spindle microtubules is made up of kinetochores-microtubules rather than interpolar microtubules. Based on these results, approximately 60% of centromeres have two kinetochores-microtubule attachments when *CSE4* is overexpressed in *C. albicans* (Figure 3C).

Overexpression of *CSE4* resulted in increased localization of kinetochores proteins and microtubules to centromere regions; total protein levels of Mtw1-GFP, Nuf2-GFP, Dad2-GFP, and Tub1-GFP remained constant (Figure S3). When measuring the background-corrected pixel intensity of kinetochores proteins and microtubules, we observed that the average background fluorescence in cells grown in succinate was higher than in cells grown in glucose, even in the absence of the *PCK1p-CSE4* construct. To confirm that the increased fluorescence was a difference in background fluorescence as a result of the media, and not an increase in protein that was not detected by western blot, we measured the background fluorescence of an untagged wild-type strain. Background fluorescence was indeed increased in succinate media relative to glucose media (23% increase,  $p < 0.0001$ ; Figure S3B), indicating that although protein concentrations increased at kinetochores foci, total amounts of kinetochores proteins were not altered.

These results indicate that overexpression of *CSE4* in *C. albicans* increased the recruitment of inner and outer

kinetochores proteins to the centromere and resulted in increased numbers of spindle microtubules. This occurred at the level of increased localization, rather than increased total amounts, of the other kinetochores proteins. In contrast, in *S. pombe*, CENP-A overexpression resulted in increased numbers of CENP-A molecules per centromere, but not in increased recruitment of other kinetochores proteins, as measured by fluorescence microscopy [7]. *C. albicans* normally has one kinetochores-microtubule attachment per centromere core region of approximately 3 kb, whereas *S. pombe* has two to four kinetochores-microtubule attachments within the centromere core region of approximately 4 kb [7]. Therefore, in wild-type *S. pombe*, the density of kinetochores proteins is higher than in *C. albicans*, and steric hindrance may prevent the formation of additional kinetochores.

Because each wild-type *C. albicans* centromere has only one kinetochores-microtubule attachment [7], the increase in kinetochores proteins and spindle microtubules could have several possible effects on chromosome segregation fidelity. Overexpression of *CSE4* could increase chromosome segregation fidelity because of increases in the number of attachments between the centromere DNA and the spindle microtubules. Alternatively, the presence of extra kinetochores proteins could decrease chromosome segregation fidelity because of improper bundling of microtubules and the potential for merotelic attachments. To address the question of how increasing the number of spindle microtubules affects chromosome segregation fidelity, we measured the rate of loss of a heterozygous *URA3* marker in noninducing and inducing conditions for *CSE4* overexpression. Interestingly, overexpression of *CSE4* did not alter chromosome segregation fidelity (Figure 3D), suggesting that *C. albicans* kinetochores function is not limited by having increased numbers of microtubules. Previous work in *S. cerevisiae* found that the number of interpolar spindle microtubules can increase when cells are arrested in anaphase [26]. To determine whether cells with overexpressed *CSE4* have any cell-cycle defects, such as anaphase arrest, we calculated the percentage of cells with mitotic spindles in cells with normal and increased levels of CENP-A (Figure 3E). Importantly, no significant increase in mitotic cells was observed, indicating that cells in which *CSE4* is overexpressed do not have cell-cycle delays. When centromeres are composed of >1 kinetochores-microtubule per centromere, they must be aligned to avoid inappropriate, merotelic associations. This function is accomplished by monopolin, a complex of proteins that ensures sister chromatid coorientation during mitosis in *S. pombe* and during meiosis I in *S. cerevisiae* [19]. Because *C. albicans* chromosomes with increased spindle microtubules have no reduction in segregation fidelity, it appears that this function has been retained. Consistent with this, the *C. albicans* genome sequence includes open reading frames (ORFs) predicted to encode monopolin complex members (orf19.7663 and orf19.3248), and these genes are expressed [27]. The result, that extra microtubule attachments do not alter chromosome segregation, suggests that they retain function in aligning kinetochores in *C. albicans*, and it is tempting to speculate that these ORFs have a role in that process.

#### The Requirement for Dam1 Proteins Is Reduced in Strains with Extra Kinetochores Components

Because the stoichiometry of kinetochores proteins and spindle microtubules at centromeres was increased in cells overexpressing *CSE4* in *C. albicans*, we exploited this system

to determine whether the requirement for the Dam1 complex is reduced in cells with increased numbers of kinetochores and microtubule proteins. We combined the conditional overexpression of *CSE4*, under the control of the *PCK1* promoter, with the regulated expression of *DAD2* or *DAM1*, using the *MET3* promoter. As a control, we used strains that overexpressed *CSE4* and that retained an intact copy of the Dam1 complex gene, in addition to one copy that was controlled by the *MET3* promoter. Importantly, cells in which *DAD2* or *DAM1* expression was repressed and *CSE4* was overexpressed grew significantly better ( $p < 0.01$ ) relative to the control strains than cells in which *DAD2* or *DAM1* expression was repressed and *CSE4* was expressed at wild-type levels (Figure 4A). Furthermore, in *DAM1* depletion conditions, the percentage of cells with normal chromosome segregation patterns increased from ~6% to ~36% when *CSE4* was overexpressed ( $p < 0.01$ ; Figure 4B). Given that ~60% of centromeres are estimated to have multiple kinetochores-microtubule attachments when *CSE4* is overexpressed, this partial rescue of chromosome segregation is consistent with an increase in normal chromosome segregation at most, but not all, centromeres under these conditions.

It was formally possible that depletion of the Dam1 complex caused major changes in kinetochores organization. To determine whether this occurred, we examined the localization patterns of other kinetochores components, Mtw1-GFP (a MIND complex inner kinetochores component) and Nuf2-GFP (a member of the outer kinetochores Ndc80 complex), following *DAM1* repression. Binding of Mtw1-GFP and Nuf2-GFP at the kinetochores was maintained when *MET3p-DAM1* expression was repressed (Figure S4A). Thus, the assembly of the remainder of the kinetochores was not perturbed by repression of *DAM1*. Interestingly, kinetochores declustering, indicative of a loss of the binding between kinetochores and spindle microtubules [28], was observed for Mtw1-GFP and Nuf2-GFP localization following depletion of *DAM1* (Figures S4A and S4B). Importantly, this declustering of kinetochores was significantly reduced ( $p < 0.01$ ) following overexpression of *CSE4* in the *DAM1* depletion strains (Figure S4B). As a control to ensure that overexpression of *CSE4* does not reduce the requirement for components of other essential kinetochores complexes, we compared the growth of strains conditionally expressing *MTW1* or *NUF2* to heterozygous strains that retained an intact copy of *MTW1* or *NUF2*. In both cases, overexpression of *CSE4* did not alter the requirement for *MTW1* or *NUF2* for growth (Figure 4C). Therefore, overexpression of *CSE4* in *C. albicans* results in increased numbers of kinetochores proteins and spindle microtubules that partially bypass the requirement for components of the Dam1 complex (*DAM1* and *DAD2*) but do not affect the requirement for essential components of the MIND and NDC80 complexes of the kinetochores.

#### Conclusions

In this work, overexpression of *CSE4* in *C. albicans* results in the recruitment of larger amounts of several kinetochores proteins and spindle microtubules; these kinetochores with increased copy numbers are functional. Although we have not conclusively shown that the extra kinetochores proteins are attached to the increased numbers of spindle microtubules, it is tempting to speculate that these are indeed extra kinetochores-microtubule attachments. Examination of the requirement of the Dam1 complex for viability when *CSE4* is overexpressed suggests that the requirement of the Dam1

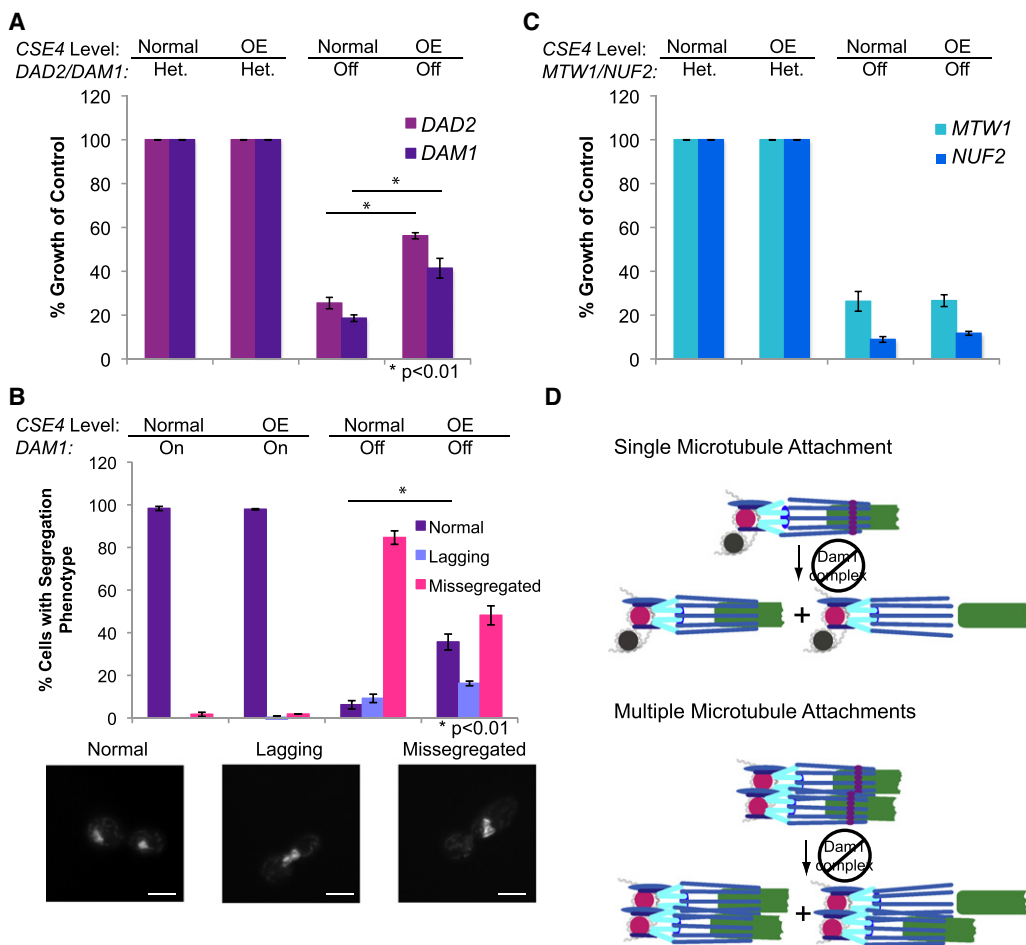


Figure 4. The Requirement for Dam1 Proteins Is Reduced in Strains with Extra Kinetochores Components

(A) Relative colony size was used to quantify growth of *PCK1p-CSE4/CSE4* strains in which the only copy of *DAD2* or *DAM1* was controlled by the *MET3* promoter (right columns), compared to strains with an intact *DAD2* or *DAM1* allele (Het). Strains were grown on YPA-glucose to repress the *PCK1* promoter (normal expression) and *MET3* promoters and on YPA-succinate to activate the *PCK1* promoter (overexpression [OE]) and repress the *MET3* promoter. Colony sizes were measured after 48 hr incubation. Data shown are the mean  $\pm$  SEM of four experiments. Differences between normal *CSE4* expression and *CSE4* overexpression were statistically significant ( $p < 0.01$ ) using a two-tailed unpaired Student's *t* test (\*).

(B) The *PCK1p-CSE4/CSE4 MET3p-DAM1/Δdam1* strain was grown in SDC-glucose-Met-Cys to repress the *PCK1* promoter and activate the *MET3* promoter, in SDC-succinate-Met-Cys to activate the *PCK1* and *MET3* promoters, in SDC-glucose+Met+Cys to repress the *PCK1* and *MET3* promoters, or in SDC-succinate+Met+Cys to activate the *PCK1* promoter and repress the *MET3* promoter for 6 hr. Repression of *PCK1* results in normal levels of *CSE4*, whereas activation results in overexpression (OE). Cells were stained with DAPI and imaged at 1000 $\times$  total magnification, and chromosome segregation was analyzed. Data shown are mean  $\pm$  SEM of three experiments. Differences between normal *CSE4* expression and *CSE4* overexpression when *DAM1* was repressed were statistically significant ( $p < 0.01$ ) using a two-tailed unpaired Student's *t* test (\*). Examples of each chromosome segregation pattern are below the figure. Scale bar represents 2  $\mu$ m.

(C) Relative colony size was used to quantify growth of *PCK1p-CSE4/CSE4* strains in which the only copy of *MTW1* or *NUF2* was controlled by the *MET3* promoter (right columns), compared to strains with an intact *MTW1* or *NUF2* allele in addition to the conditionally expressed allele. Strains were grown and colony size was measured as in (A). Data shown are the mean  $\pm$  SEM of three experiments.

(D) Proposed mechanism to explain the reduced requirement for Dam1 proteins when the number of kinetochores-microtubule interactions is increased. Larger numbers of spindle microtubules increase the chances that a defective attachment can be reestablished and thus reduce the requirement for the Dam1 processivity factor.

complex for viability is a function of whether an organism has a single or multiple kinetochores-microtubule attachments rather than whether the organism has point or regional centromeres. In *S. cerevisiae*, the Dam1 complex has been proposed to help capture the depolymerization force of the spindle microtubule to help chromosomes segregate [29, 30]. The Dam1 complex has been proposed to form rings that surround the microtubule to couple the kinetochore to the microtubule [30, 31], although nonring forms of the Dam1 complex may be sufficient to link kinetochores to spindle microtubules [32]. Our observation that increased numbers of kinetochores

proteins and spindle microtubules reduce the requirement for the Dam1 complex is consistent with the previously published *S. cerevisiae* and *S. pombe* phenotypes and is also consistent with the role of the Dam1 complex as an *in vivo* processivity factor for the attachment of microtubules to kinetochores proteins such as Ndc80. Interestingly, the Dam1 complex components are present at a lower concentration per kinetochore in *S. pombe* than in *S. cerevisiae* or *C. albicans* [7]. Furthermore, the Dam1 complex is not evident in mammals or other higher eukaryotes, which also have multiple kinetochores-microtubule attachments. In humans,

the Ska1 complex has been proposed to increase the stability of kinetochore-microtubule attachment [33, 34]. Although the Ska1 complex has been proposed to be a functional homolog of the Dam1 complex in mammalian cells, the mechanism for the Ska1 complex is not clear, and its dependence upon numbers of kinetochore-microtubule attachments has not been explored [35].

We propose that the Dam1 complex is required for viability in *S. cerevisiae* and *C. albicans* because its function as a processivity factor for kinetochore-microtubule binding is more critical when chromosome segregation is dependent upon a single kinetochore-microtubule. We suggest that when multiple microtubules are present, Ndc80 binding to kinetochore-microtubules is redundant, such that if a defect occurs at one kinetochore-microtubule, other kinetochore-microtubule attachments in the same centromere DNA region can help prevent the kinetochore and spindle microtubule from diffusing away from each other (Figure 4D). In summary, this study provides *in vivo* evidence, in an organism in which the number of kinetochore proteins and spindle microtubules at a regional centromere can be manipulated, that the Dam1 complex acts as a processivity factor to connect kinetochores to microtubules.

#### Supplemental Information

Supplemental Information includes four figures, two tables, and Supplemental Experimental Procedures and can be found with this article online at doi:10.1016/j.cub.2011.04.002.

#### Acknowledgments

We would like to acknowledge Maryam Gerami-Nejad for assistance with strain construction and members of the Berman laboratory for many helpful discussions. We would also like to thank Meleah Hickman, Hung-Ji Tsai, Ben Harrison, Duncan Clarke, Tricia Davis, and members of the Davis laboratory for providing very useful feedback on the manuscript. This work is supported by a Ruth L. Kirschstein National Research Service Award Individual Fellowship F32 AI800742 to L.S.B., funding from the University of Minnesota Undergraduate Research Opportunity Program to S.E.A., and funding by National Institute of Health/National Institute of Allergy and Infectious Disease AI075096 to J.B.

Received: November 24, 2010

Revised: February 5, 2011

Accepted: March 30, 2011

Published online: May 5, 2011

#### References

1. Lampert, F., Hornung, P., and Westermann, S. (2010). The Dam1 complex confers microtubule plus end-tracking activity to the Ndc80 kinetochore complex. *J. Cell Biol.* 189, 641–649.
2. Tien, J.F., Umbreit, N.T., Gestaut, D.R., Franck, A.D., Cooper, J., Wordeman, L., Gonen, T., Asbury, C.L., and Davis, T.N. (2010). Cooperation of the Dam1 and Ndc80 kinetochore complexes enhances microtubule coupling and is regulated by aurora B. *J. Cell Biol.* 189, 713–723.
3. Janke, C., Ortíz, J., Tanaka, T.U., Lechner, J., and Schiebel, E. (2002). Four new subunits of the Dam1-Duo1 complex reveal novel functions in sister kinetochore biorientation. *EMBO J.* 21, 181–193.
4. Li, J.M., Li, Y., and Elledge, S.J. (2005). Genetic analysis of the kinetochore DASH complex reveals an antagonistic relationship with the ras/protein kinase A pathway and a novel subunit required for Ask1 association. *Mol. Cell Biol.* 25, 767–778.
5. Cheeseman, I.M., Brew, C., Wolyniak, M., Desai, A., Anderson, S., Muster, N., Yates, J.R., Huffaker, T.C., Drubin, D.G., and Barnes, G. (2001). Implication of a novel multiprotein Dam1p complex in outer kinetochore function. *J. Cell Biol.* 155, 1137–1145.
6. Sanchez-Perez, I., Renwick, S.J., Crawley, K., Karig, I., Buck, V., Meadows, J.C., Franco-Sanchez, A., Fleig, U., Toda, T., and Millar, J.B. (2005). The DASH complex and Klp5/Klp6 kinesin coordinate bipolar chromosome attachment in fission yeast. *EMBO J.* 24, 2931–2943.
7. Joglekar, A.P., Bouck, D., Finley, K., Liu, X., Wan, Y., Berman, J., He, X., Salmon, E.D., and Bloom, K.S. (2008). Molecular architecture of the kinetochore-microtubule attachment site is conserved between point and regional centromeres. *J. Cell Biol.* 181, 587–594.
8. Westermann, S., Wang, H.W., Avila-Sakar, A., Drubin, D.G., Nogales, E., and Barnes, G. (2006). The Dam1 kinetochore ring complex moves processively on depolymerizing microtubule ends. *Nature* 440, 565–569.
9. Meraldi, P., McAnish, A.D., Rheinbay, E., and Sorger, P.K. (2006). Phylogenetic and structural analysis of centromeric DNA and kinetochore proteins. *Genome Biol.* 7, R23.
10. Joglekar, A.P., Bouck, D.C., Molk, J.N., Bloom, K.S., and Salmon, E.D. (2006). Molecular architecture of a kinetochore-microtubule attachment site. *Nat. Cell Biol.* 8, 581–585.
11. Waldo, J.T., Greagor, S.A., Iqbal, A.J., Gittens, A.S., and Grant, K.K. (2010). The Dad1 subunit of the yeast kinetochore Dam1 complex is an intrinsically disordered protein. *Biochem. Biophys. Res. Commun.* 400, 313–317.
12. Reedy, J.L., Floyd, A.M., and Heitman, J. (2009). Mechanistic plasticity of sexual reproduction and meiosis in the *Candida* pathogenic species complex. *Curr. Biol.* 19, 891–899.
13. Roemer, T., Jiang, B., Davison, J., Ketela, T., Veillette, K., Breton, A., Tandia, F., Linteau, A., Sillaots, S., Marta, C., et al. (2003). Large-scale essential gene identification in *Candida albicans* and applications to antifungal drug discovery. *Mol. Microbiol.* 50, 167–181.
14. Enloe, B., Diamond, A., and Mitchell, A.P. (2000). A single-transformation gene function test in diploid *Candida albicans*. *J. Bacteriol.* 182, 5730–5736.
15. Sanyal, K., and Carbon, J. (2002). The CENP-A homolog CaCse4p in the pathogenic yeast *Candida albicans* is a centromere protein essential for chromosome transmission. *Proc. Natl. Acad. Sci. USA* 99, 12969–12974.
16. Collins, K.A., Castillo, A.R., Tatsutani, S.Y., and Biggins, S. (2005). De novo kinetochore assembly requires the centromeric histone H3 variant. *Mol. Biol. Cell* 16, 5649–5660.
17. Liu, S.T., Rattner, J.B., Jablonski, S.A., and Yen, T.J. (2006). Mapping the assembly pathways that specify formation of the trilaminar kinetochore plates in human cells. *J. Cell Biol.* 175, 41–53.
18. Joglekar, A.P., Bloom, K., and Salmon, E.D. (2009). *In vivo* protein architecture of the eukaryotic kinetochore with nanometer scale accuracy. *Curr. Biol.* 19, 694–699.
19. Leuker, C.E., Sonneborn, A., Delbrück, S., and Ernst, J.F. (1997). Sequence and promoter regulation of the PCK1 gene encoding phosphoenolpyruvate carboxykinase of the fungal pathogen *Candida albicans*. *Gene* 192, 235–240.
20. Field, Y., Fondufe-Mittendorf, Y., Moore, I.K., Mieczkowski, P., Kaplan, N., Lubling, Y., Lieb, J.D., Widom, J., and Segal, E. (2009). Gene expression divergence in yeast is coupled to evolution of DNA-encoded nucleosome organization. *Nat. Genet.* 41, 438–445.
21. Collins, K.A., Furuyama, S., and Biggins, S. (2004). Proteolysis contributes to the exclusive centromere localization of the yeast Cse4/CENP-A histone H3 variant. *Curr. Biol.* 14, 1968–1972.
22. Heun, P., Erhardt, S., Blower, M.D., Weiss, S., Skora, A.D., and Karpen, G.H. (2006). Mislocalization of the *Drosophila* centromere-specific histone CID promotes formation of functional ectopic kinetochores. *Dev. Cell* 10, 303–315.
23. Van Hooser, A.A., Ouspenski, I.I., Gregson, H.C., Starr, D.A., Yen, T.J., Goldberg, M.L., Yokomori, K., Earnshaw, W.C., Sullivan, K.F., and Brinkley, B.R. (2001). Specification of kinetochore-forming chromatin by the histone H3 variant CENP-A. *J. Cell Sci.* 114, 3529–3542.
24. Roy, B., Burrack, L.S., Lone, M.A., Berman, J., and Sanyal, K. (2011). CaMtw1, a member of the evolutionarily conserved Mis12 kinetochore protein family, is required for efficient inner kinetochore assembly in the pathogenic yeast *Candida albicans*. *Mol. Microbiol.* 80, 14–32.
25. Furniss, K., Vas, A.C., Lane, A., and Clarke, D.J. (2009). Assaying topoisomerase II checkpoints in yeast. *Methods Mol. Biol.* 582, 167–187.
26. O'Toole, E.T., Mastronarde, D.N., Giddings, T.H., Jr., Winey, M., Burke, D.J., and McIntosh, J.R. (1997). Three-dimensional analysis and ultrastructural design of mitotic spindles from the *cdc20* mutant of *Saccharomyces cerevisiae*. *Mol. Biol. Cell* 8, 1–11.

27. Côte, P., Hogues, H., and Whiteway, M. (2009). Transcriptional analysis of the *Candida albicans* cell cycle. *Mol. Biol. Cell* **20**, 3363–3373.
28. Anderson, M., Haase, J., Yeh, E., and Bloom, K. (2009). Function and assembly of DNA looping, clustering, and microtubule attachment complexes within a eukaryotic kinetochore. *Mol. Biol. Cell* **20**, 4131–4139.
29. Asbury, C.L., Gestaut, D.R., Powers, A.F., Franck, A.D., and Davis, T.N. (2006). The Dam1 kinetochore complex harnesses microtubule dynamics to produce force and movement. *Proc. Natl. Acad. Sci. USA* **103**, 9873–9878.
30. Grishchuk, E.L., Efremov, A.K., Volkov, V.A., Spiridonov, I.S., Gudimchuk, N., Westermann, S., Drubin, D., Barnes, G., McIntosh, J.R., and Ataullakhanov, F.I. (2008). The Dam1 ring binds microtubules strongly enough to be a processive as well as energy-efficient coupler for chromosome motion. *Proc. Natl. Acad. Sci. USA* **105**, 15423–15428.
31. Miranda, J.J., De Wulf, P., Sorger, P.K., and Harrison, S.C. (2005). The yeast DASH complex forms closed rings on microtubules. *Nat. Struct. Mol. Biol.* **12**, 138–143.
32. Gao, Q., Courtheoux, T., Gachet, Y., Tournier, S., and He, X. (2010). A non-ring-like form of the Dam1 complex modulates microtubule dynamics in fission yeast. *Proc. Natl. Acad. Sci. USA* **107**, 13330–13335.
33. Hanisch, A., Silljé, H.H., and Nigg, E.A. (2006). Timely anaphase onset requires a novel spindle and kinetochore complex comprising Ska1 and Ska2. *EMBO J.* **25**, 5504–5515.
34. Gaitanos, T.N., Santamaria, A., Jeyaparakash, A.A., Wang, B., Conti, E., and Nigg, E.A. (2009). Stable kinetochore-microtubule interactions depend on the Ska complex and its new component Ska3/C13Orf3. *EMBO J.* **28**, 1442–1452.
35. Welburn, J.P., Grishchuk, E.L., Backer, C.B., Wilson-Kubalek, E.M., Yates, J.R., 3rd, and Cheeseman, I.M. (2009). The human kinetochore Ska1 complex facilitates microtubule depolymerization-coupled motility. *Dev. Cell* **16**, 374–385.